

SOUTH METRO DENVER Business Demographics

South Metro Denver is the primary location for Fortune 1000 companies based in Colorado

- ▶ South Metro Denver is home to seven Fortune 1000 companies
- ▶ Almost half of all Fortune 1000 companies with headquarters in Colorado are based in South Metro Denver
- ▶ The combined sales revenue of Fortune 1000 companies located in South Metro Denver is \$41.6 billion

Over 100 companies with headquarters in Colorado are based in South Metro Denver

- ▶ South Metro hosts 65 companies with 1,000 or more employees; or 25% of all 1,000 plus employee companies in the Colorado
- ▶ South Metro has 157 mid-size companies (250-999 employees)

Fortune 1000 Companies in South Metro Denver

	Sales (\$ millions)
Apartment Investment & Management Company	\$1,691
CH2M HILL Companies, Ltd.	\$3,152
EchoStar Communications Corporation	\$9,818
First Data Corporation	\$7,076
Liberty Global Inc.	\$6,487
Liberty Media Corporation	\$8,613
MDC Holdings Inc.	\$4,801
Combined sales (\$ millions)	\$41,638

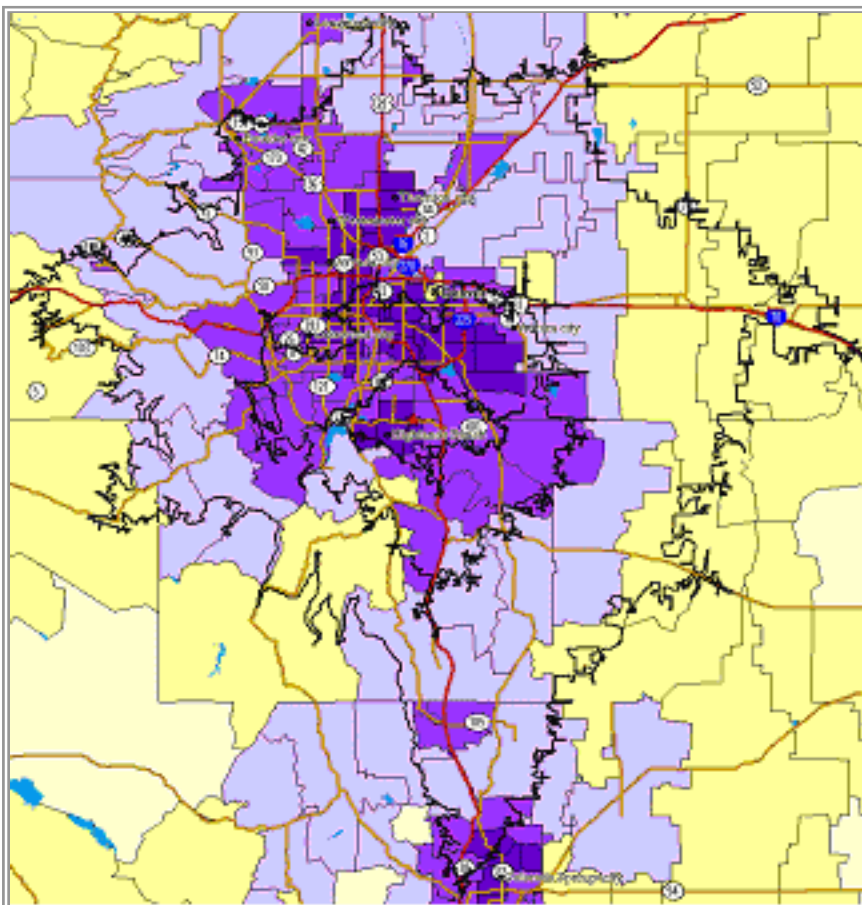
Source: Dun & Bradstreet

South Metro Denver is one of the fastest growing areas in the state

- ▶ Two hundred and sixty thousand residents live within 15 minutes
- ▶ By 2011 the 15 minute drivetime population will be over three hundred thousand (306,000)
- ▶ Population growth at 16% is twice the Metro Denver average of 8%

South Metro Denver 15 Minute Drivetime Demographics					
	2006 total	2011 forecast	Growth 2006-2011	2006 % of total	2011 % of total
Total Population	263,478	306,577	16%	100%	100%
Population Age 0 to 15	60,050	66,099	10%	22.8%	21.6%
Population Age 15 to 25	33,861	41,674	23%	12.9%	13.6%
Population Age 25+	169,567	198,804	17%	64.4%	64.8%
South Metro Denver 30 Minute Drivetime Demographics					
Total Population	1,284,728	1,392,824	8%	100%	100%
South Metro Denver 60 Minute Drivetime Demographics					
Total Population	2,687,752	2,880,081	7%	100%	100%

Source: demographicsnow.com



South Metro Denver Drivetime Map

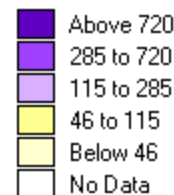
- ▶ The map left shows 15 minute, 30 minute and 60 minute drivetime radii from the center of South Metro Denver
- ▶ The color gradient identifies the population density by Zip Code area (see key below)

Almost 1.3 million residents live within a 30 minute drivetime

- ▶ The resident population within a 60 minute drivetime is almost 2.7 million

The area has a young and highly educated population base

- ▶ Young, college-educated workers are attracted by the high-tech economic base
- ▶ The fastest growing age group is the 15 to 25 year olds, with 23% growth forecast by 2011
- ▶ Three quarters of people are college educated
- ▶ 56% have an Associates degree or higher, compared to around 35% nationally



Persons per sq. mile